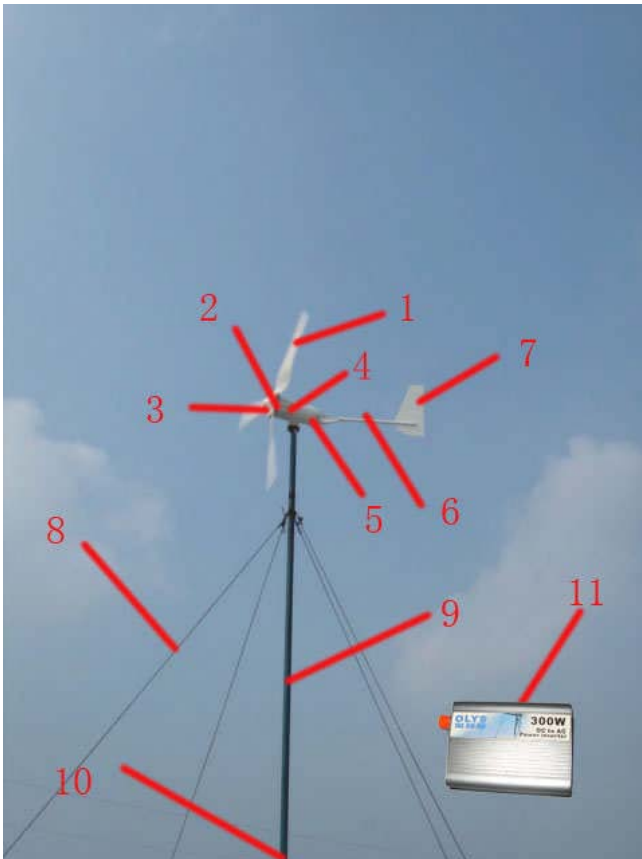


Model : TWT-300

- 1- Blades (3 pieces)
- 2- Blades hub (1 piece)
- 3- Nose cone (1 piece)
- 4- Generator (1 piece)
- 5- Swing mechanism (1 piece)
- 6- Tail rod (1 piece)
- 7- Tail vane (2 pieces)
- 8- Guyed wire (4 pieces)
- 9- Guyed cable tower (3 sections)
- 10-Tower base and other accessories (1 set)
- 11-Integrated controller & inverter (1 piece)

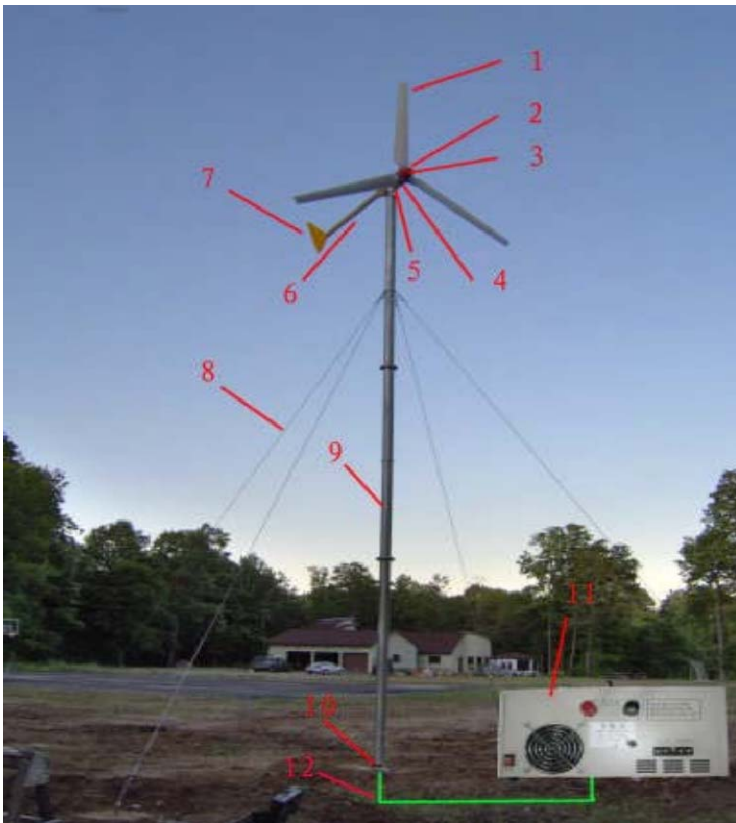
Remarks:

1. The above picture is served as the explanation of the configuration of product parts; the outlook might be varied from the model.
2. No.11 can be separated controller and inverter or integrated sine wave inverter/controller according to the quotation.

Parameter	
Rated power(W)	300
Rated voltage(V)	24
Rotor diameter(m)	1.5
Start-up wind speed(m/s)	2.5
Rated wind speed(m/s)	12
Security wind speed(m/s)	35
Rated Rotating speed(RPM)	450
Blades No.	3
Guyed cable tower height (m)	6
Suggested battery capacity	12V150AH * 2
Matched inverter type	Single-phase modified wave inverter

Remarks:

1. The shipping port is Shanghai port;
2. Two-year warranty is offered for generator, tower, blades and controller while six-month warranty for inverter since the purchase date;
3. There might be some discrepancy within 10% in terms of the actual packing volume, weight and the loaded quantity in container;
4. Lengthen the cable will be calculated by USD 1.5/m;

Model : TWT -500

- 1- Blades (3 pieces)
- 2- Blades hub (1 piece)
- 3- Nose cone (1 piece)
- 4- Generator (1 piece)
- 5- Swing mechanism (1 piece)
- 6- Tail rod (1 piece)
- 7- Tail vane (2 pieces)
- 8- Guyed wire (4 pieces)
- 9- Guyed cable tower (3 sections)
- 10-Tower base and other accessories (1 set)
- 11-Integrated controller & inverter (1 piece)
- 12-Cable from generator to controller (1 piece)

Remarks:

1. The above picture is served as the explanation of the configuration of product parts; the outlook might be varied from the model.
2. No.11 can be separated controller and inverter or integrated sine wave inverter/controller according to

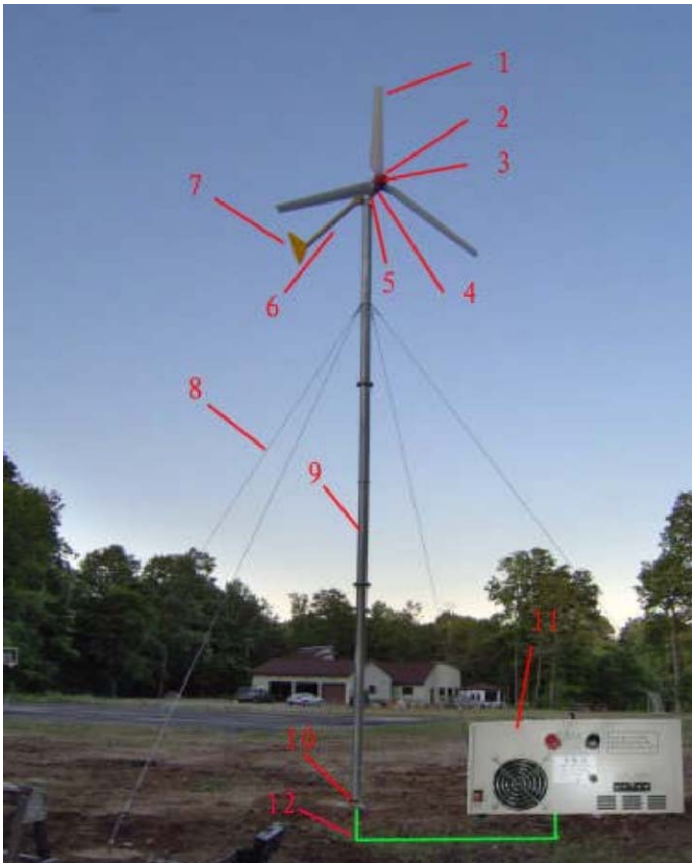
Parameter	
Rated power(W)	500
Rated voltage(V)	24
Rotor diameter(m)	2.5
Start-up wind speed(m/s)	2
Rated wind speed(m/s)	8
Security wind speed(m/s)	35
Rated Rotating speed(RPM)	400
Blades No.	3
Guyed cable tower height (m)	6
Suggested battery capacity	12V200AH * 2
Matched inverter type	Single-phase Sine wave inverter
Matched cable (m)	20

Standard configuration	
Generator part(2,3,4,5,6,7,12)	
Blades part (1)	
Integrated controller & inverter(11)	
Guyed cable tower & accessories	

Optional accessory	
Free standing tower-type A	
Manual hydraulic tower-type B	
Manual hydraulic system	

Remarks:

1. The shipping port is Shanghai port;
2. Two-year warranty is offered for generator, tower, blades and controller while six-month warranty for inverter since the purchase date;
3. There might be some discrepancy within 10% in terms of the actual packing volume, weight and the loaded quantity in container;
4. Lengthen the cable will be calculated by USD

Model : TWT -1000

- 1- Blades (3 pieces)
- 2- Blades hub (1 piece)
- 3- Nose cone (1 piece)
- 4- Generator (1 piece)
- 5- Swing mechanism (1 piece)
- 6- Tail rod (1 piece)
- 7- Tail vane (2 pieces)
- 8- Guyed wire (4 pieces)
- 9- Guyed cable tower (3 sections)
- 10-Tower base and other accessories (1 set)
- 11-Integrated controller & inverter (1 piece)
- 12-Cable from generator to controller (1 piece)

Remarks:

1. The above picture is served as the explanation of the configuration of product parts; the outlook might be varied from the model.
2. No.11 can be separated controller and inverter or integrated sine wave inverter/controller according to

Parameter	
Rated power(W)	1000
Rated voltage(V)	48
Rotor diameter(m)	2.7
Start-up wind speed(m/s)	2
Rated wind speed(m/s)	9
Security wind speed(m/s)	35
Rated Rotating speed(RPM)	400
Blades No.	3
Guyed cable tower height (m)	6
Suggested battery capacity	12V200AH * 4
Matched inverter type	Single-phase Sine wave inverter
Matched cable (m)	20

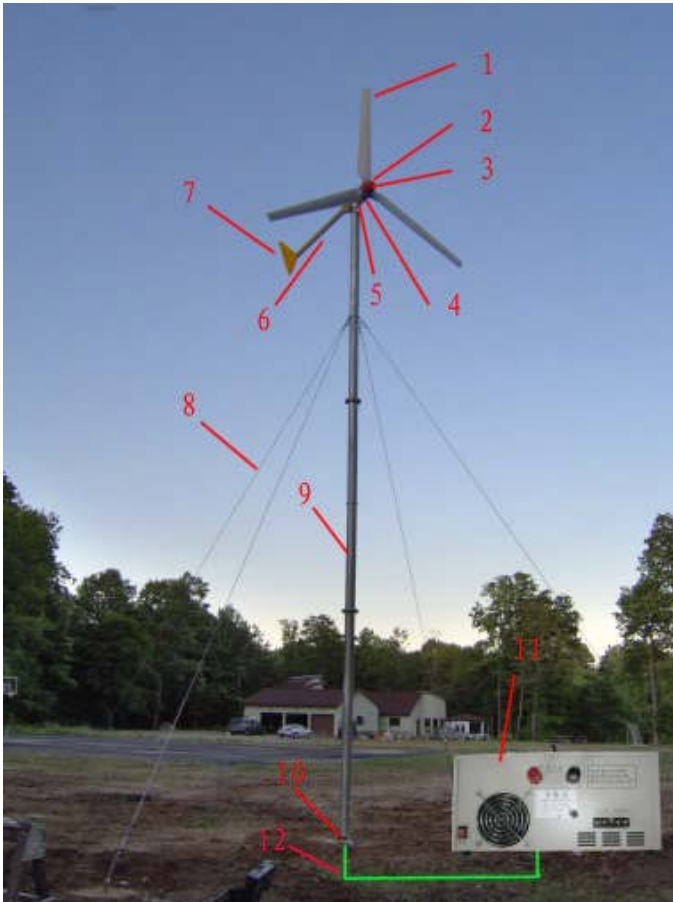
Standard configuration	
Generator part(2,3,4,5,6,7,12)	
Blades part (1)	
Integrated controller & inverter(11)	
Guyed cable tower & accessories	
Total	

Optional accessory	
Free standing tower-type A	
Manual hydraulic tower-type B	
Manual hydraulic system	

Remarks:

1. The shipping port is Shanghai port;
2. Two-year warranty is offered for generator, tower, blades and controller while six-month warranty for inverter since the purchase date;
3. There might be some discrepancy within 10% in terms of the actual packing volume, weight and the loaded quantity in container;
4. Lengthen the cable will be calculated by USD 1 5/m;

Model : TWT -2000



- 1- Blades (3 pieces)
- 2- Blades hub (1 piece)
- 3- Nose cone (1 piece)
- 4- Generator (1 piece)
- 5- Swing mechanism (1 piece)
- 6- Tail rod (1 piece)
- 7- Tail vane (2 pieces)
- 8- Guyed wire (4 pieces)
- 9- Guyed cable tower (3 sections)
- 10-Tower base and other accessories (1 set)
- 11-Inverter and controller (1 piece each)
- 12-Cable from generator to controller (1 piece)

Remarks:

- 1. The above picture is served as the explanation of the configuration of product parts; the outlook might be varied from the model.
- 2. No.11 can be separated controller and inverter or integrated sine wave inverter/controller according to

Parameter	
Rated power(W)	2000
Rated voltage(V)	120
Rotor diameter(m)	3.2
Start-up wind speed(m/s)	2
Rated wind speed(m/s)	9
Security wind speed(m/s)	35
Rated Rotating speed(RPM)	400
Blades No.	3
Guyed cable tower height (m)	9
Suggested battery capacity	12V200AH * 10
Matched inverter type	Single-phase Sine wave inverter
Matched cable (m)	20

Quotation for standard configuration	
Generator part(2,3,4,5,6,7,12)	
Blades part (1)	
Controller/inverter(11)	
Guyed cable tower & accessories	
Total	

Optional accessory (USD)	
Free standing tower-type A	
Manual hydraulic tower-type B	
Manual hydraulic system	

Remarks:

- 1. The shipping is Shanghai port;
- 2. Two-year warranty is offered for generator, tower, blades and controller while six-month warranty for inverter since the purchase date;
- 3. There might be some discrepancy within 10% in terms of the actual packing volume, weight and the loaded quantity in container;
- 4. Lengthen the cable will be calculated by USD 1.5/m;

Model : TWT-3000

- 1- Blades (3 pieces)
- 2- Blades hub (1 piece)
- 3- Nose cone (1 piece)
- 4- Swing mechanism (1 piece)
- 5- Dogvane (1 piece)
- 6- Generator (1 piece)
- 7- Anemoscope (1 piece)
- 8- Free standing tower-type A (3 sections)
- 9- Cable from generator to controller(3 pieces · 15 cores)
- 10-Controller (1 piece)
- 11-Dumploder (1 piece)
- 12-Inverter (1 piece)
- 13-Displayer (1 piece)
- 14-Cable from displayer to controller(1 piece, 5 cores)
- 15-Foundation accessory (1 set)

Remarks:

1. The above picture is served as the explanation of the configuration of product parts; the outlook might be varied from the model.
2. No.5 and No.7 has been integrated and will be installed on generator.
3. No. 15 including position flange, re-bars and bolts

Parameter	
Rated power(W)	3000
Rated voltage(V)	240
Rotor diameter(m)	4.5
Start-up wind speed(m/s)	2
Rated wind speed(m/s)	10
Security wind speed(m/s)	45
Rated Rotating speed(RPM)	220
Blades No.	3
Free standing tower height (m)	12
Suggested battery capacity	12V200AH * 20
Matched inverter type	Single-phase sine wave inverter
Matched cable (m)	No. 9 : 16 No. 14 : 30

Standard configuration

Generator part (2,3,4,5,6,7,9)	
Blades part(1)	
Controller(10,11,13,14)	
Inverter(12)	
Free standing tower-type A(8,15)	

Optional accessory

Hydraulic tower-type B	
Electrical hydraulic system	
Gasoline engine for electrical pump	
Three-phase sine wave inverter	

Remarks:

1. The Shipping port is Shanghai port;
2. Two-year warranty is offered for generator, tower, blades and controller while six-month warranty for inverter since the purchase date;
3. There might be some discrepancy within 10% in terms of the actual packing volume, weight and the loaded quantity in container;
4. Lengthen the cable (No.9) will be calculated by USD 5/m; Lengthen the cable (No.14) will be calculated by USD 1/m.

Model : TWT-5000

- 1- Blades (3 pieces)
- 2- Blades hub (1 piece)
- 3- Nose cone (1 piece)
- 4- Swing mechanism (1 piece)
- 5- Dogvane (1 piece)
- 6- Generator (1 piece)
- 7- Anemoscope (1 piece)
- 8- Free standing tower-type A (3 sections)
- 9- Cable from generator to controller(3 pieces 15 cores)
- 10-Controller (1 piece)
- 11-Dumploader (1 piece)
- 12-Inverter (1 piece)
- 13-Displayer (1 piece)
- 14-Cable from displayer to controller(1 piece, 5 cores)
- 15-Foundation accessory (1 set)

Remarks:

1. The above picture is served as the explanation of the configuration of product parts; the outlook might be varied from the model.
2. No.5 and No.7 has been integrated and will be installed on generator.
3. No.15 including position flange, re-bars and bolts.

Parameter	
Rated power(W)	5000
Rated voltage(V)	240
Rotor diameter(m)	6.4
Start-up wind speed(m/s)	2
Rated wind speed(m/s)	10
Security wind speed(m/s)	45
Rated Rotating speed(RPM)	200
Blades No.	3
Free standing tower height (m)	12
Suggested battery capacity	12V300AH * 20
Matched inverter type	Single-phase sine wave inverter
Matched cable (m)	No. 9 : 16 No. 14 : 30

Quotation for standard configuration (USD)	
Generator part (2,3,4,5,6,7,9)	
Blades part(1)	
Controller(10,11,13,14)	
Inverter(12)	
Free standing tower-type A(8,15)	
Total	

Optional accessory (USD)	
Hydraulic tower-type B	
Electrical hydraulic system	
Gasoline engine for electrical pump	
Three-phase sine wave inverter	
Support tool for free stand tower	

Remarks:

1. The shipping port is Shanghai port;
2. Two-year warranty is offered for generator, tower, blades and controller while six-month warranty for inverter since the purchase date;
3. There might be some discrepancy within 10% in terms of the actual packing volume, weight and the loaded quantity in container;
4. Lengthen the cable (No.9) will be calculated by USD 5/m; Lengthen the cable (No.14) will

Model : TWT -10000

- 1- Blades (3 pieces)
- 2- Blades hub (1 piece)
- 3- Nose cone (1 piece)
- 4- Swing mechanism (1 piece)
- 5- Dogvane (1 piece)
- 6- Generator (1 piece)
- 7- Anemoscope (1 piece)
- 8- Free standing tower-type A (3 sections)
- 9- Cable from generator to controller(3 pieces ·15 cores)
- 10-Controller (1 piece)
- 11-Dumploader (1 piece)
- 12-Inverter (1 piece)
- 13-Displayer (1 piece)
- 14-Cable from displayer to controller(1 piece, 5 cores)
- 15-Foundation accessory (1 set)

Remarks:

1. The above picture is served as the explanation of the configuration of product parts; the outlook might be varied from the model.
2. No.5 and No.7 has been integrated and will be installed on generator.
3. No. 15 including position flange, re-bars and bolts.

Parameter	
Rated power(W)	10000
Rated voltage(V)	240
Rotor diameter(m)	8
Start-up wind speed(m/s)	2
Rated wind speed(m/s)	10
Security wind speed(m/s)	45
Rated Rotating speed(RPM)	180
Blades No.	3
Free standing tower height (m)	12
Suggested battery capacity	12V400AH * 20
Matched inverter type	Single-phase sine wave inverter
Matched cable (m)	No. 9 : 16 No. 14 : 30

standard configuration

Generator part (2,3,4,5,6,7,9)	
Blades part(1)	
Controller(10,11,13,14)	
Inverter(12)	
Free standing tower-type A(8,15)	
Total	

Optional accessory

Hydraulic tower-type B	
Electrical hydraulic system	
Gas engine for electrical pump	
Three-phase sine wave inverter	
Support tool for free stand tower	

Remarks:

1. The Shipping port is Shanghai port;
2. Two-year warranty is offered for generator, tower, blades and controller while six-month warranty for inverter since the purchase date;
3. There might be some discrepancy within 10% in terms of the actual packing volume, weight and the loaded quantity in container;
4. Lengthen the cable (No.9) will be calculated by USD 6/m; Lengthen the cable (No.14) will be calculated by USD 1/m.

Model : TWT-20000

- 1- Blades (3 pieces)
- 2- Blades hub (1 piece)
- 3- Nose cone (1 piece)
- 4- Swing mechanism (1 piece)
- 5- Dogvane (1 piece)
- 6- Generator (1 piece)
- 7- Anemoscope (1 piece)
- 8- Free standing tower-type A (3 sections)
- 9- Cable from generator to controller(3 pieces ·15 cores)
- 10-Controller (1 piece)
- 11-Dumploader (1 piece)
- 12-Inverter (1 piece)
- 13-Displayer (1 piece)
- 14-Cable from displayer to controller(1 piece, 5 cores)
- 15-Foundation accessory (1 set)

Remarks:

1. The above picture is served as the explanation of the configuration of product parts; the outlook might be varied from the model.
2. No.5 and No.7 has been integrated and will be installed on generator.
3. No. 15 including position flange, re-bars and bolts.

Parameter	
Rated power(W)	20000
Rated voltage(V)	360
Rotor diameter(m)	10
Start-up wind speed(m/s)	2
Rated wind speed(m/s)	12
Security wind speed(m/s)	45
Rated Rotating speed(RPM)	90
Blades No.	3
Free standing tower height (m)	18
Suggested battery capacity	12V600AH * 30
Matched inverter type	Single-phase sine wave inverter
Matched cable (m)	No. 9 : 22 No. 14 : 30
standard configuration	
Generator part (2,3,4,5,6,7,9)	
Blades part(1)	
Controller(10,11,13,14)	
Inverter(12)	
Free standing tower-type A(8,15)	
Optional accessory	
Three-phase sine wave inverter	

Remarks:

1. The Shipping port is Shanghai port;
2. Two-year warranty is offered for generator, tower, blades and controller while six-month warranty for inverter since the purchase date;
3. There might be some discrepancy within 10% in terms of the actual packing volume, weight and the loaded quantity in container;
4. Lengthen the cable (No.9) will be calculated by USD 6/m; Lengthen the cable (No.14) will be calculated by USD 1/m.